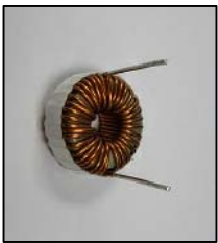
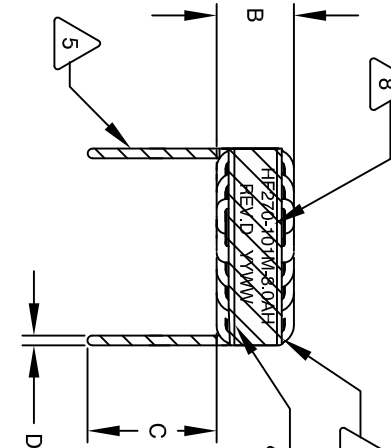
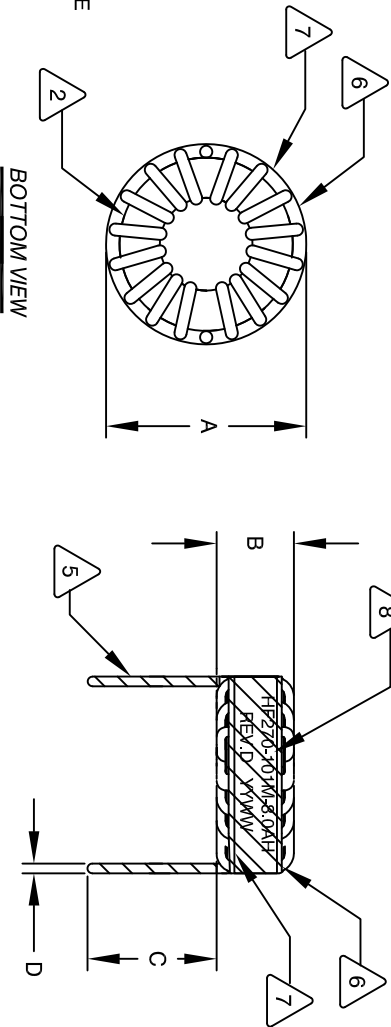


The information contained in this drawing is the sole property of CWS Coil Winding Specialist. Any reproduction in part or whole without written permission of CWS Coil Winding Specialist is prohibited.

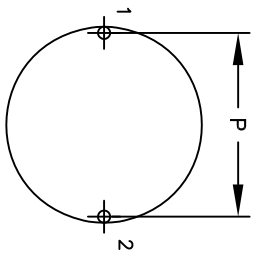


DIMENSIONAL TOLERANCES INCHES [MM]					
A	B	C	D	P	
MAX	MAX	MIN	REF	REF	REF
1.30 [33.02]	0.69 [17.50]	0.75 [19.05]	0.047 [1.19]	1.25 [31.75]	

REVISION HISTORY				SIGN & DATE		
REV	ECN	DESCRIPTION	BY	DATE	CHK	DATE
C1		CHANGED CLEAR MYLAR TAPE WIDTH	TN	01/04/2021	JL	01/04/2021
D		INCREASED DCR MAX VALUE & B DIMENSION	TN	04/13/2021	JL	04/13/2021



DC BIAS TABLE	
DC BIAS (AMP)	L@1KHz (REF)
0	100uH
1	100uH
2	99uH
4	98uH
6	96uH
8	93uH



DC BIAS (AMP)	L@1KHz (REF)
0	100uH
1	100uH
2	99uH
4	98uH
6	96uH
8	93uH

MOUNTING HOLES PATTERN

- 9 BUILT TO ROHS AND LEAD FREE
  - 8 MARK PART NUMBER, REVISION AND DATE CODE OF GLASS TAPE.
  - 7 GLASS TAPE. MYLAR TAPE SHALL NOT EXTEND OUTSIDE USE SMALLER WIDTH CLEAR MYLAR TAPE TO WRAP OVER
  - 6 WRAP INDUCTOR WITH GLASS TAPE FIRST.
  - 5 MUST REST FLAT ON PCB, LEADS MUST BE TANGENT TO THE CORE FLUSH WITH THE COIL EDGE, AS SHOWN (I.E. COIL REMOVE INSULATION AND TIN LEADS 0.75 INCH
  - 4 WIND COILS EVENLY SPACED AROUND THE CORE CONSTRUCTION:
  - 3 WEIGHT: 50 GRAMS TYPICAL THESE SPECIFICATIONS ARE BASED ON LOW RIPPLE CURRENT INTERWINDING CAPACITANCE = 22.6pF TYP @ SRF SRF = 3.38MHz TYPICAL |Z| = 13.8 KILLO-OHMS TYP @ SRF RECOMMENDED AMBIENT OPERATING TEMP: -55°C TO 180°C HI-POT TEST FOR WINDING TO CORE ISOLATION = 500VDC MIN INDUCTOR CURRENT RATING: 8 AMPS, 40 °C TEMP. RISE WITH SOME AIR FLOW DCR = 25 MILLIOHMS MAX.
  - 2 INDUCTANCE AT DC BIAS: SEE TABLE ON THE RIGHT INDUCTANCE = 100 uH±10% @ 1 KHz, 250mV, ZERO DC BIAS SPECIFICATIONS @ 25°C:
  - 1 WIRE: UL RECOGNIZED 200°C RATED MAGNET WIRE CORE: POWDERED TOROIDAL CORE, CWS BYTEMARK OR OTHER APPROVED PART MATERIAL: UL RECOGNIZED 94V-0 FOR FLAMMABILITY, RATING CLASS B (130°C MIN), REQUIRED.
- ANY TOLERANCE. THIS DIM. CAN VARY A LITTLE FROM PART TO PART.
- \*TYP IN DIM. TABL. REFERS TO A NON-CRITICAL TYPICAL (AVERAGE) DIM. WITHOUT NOTES: UNLESS OTHERWISE SPECIFIED, READ NOTES FROM BOTTOM TO TOP.
- CAGE CODE: 5DME2

UNLESS OTHERWISE SPECIFIED	
DIMENSIONING AND TOLERANCES PER ANSI Y14.5M AND [MILLIMETERS]	
TOLERANCE INCHES: .XXX=±.005 .XX=±.015 .X=±.030 .XXX=±.127 .XX=±.158 .X=±.30	ANGLE PROJECTION
DO NOT SCALE DRAWING	

CODE	IDENT	MFG. P/N	DESCRIPTION	ITEM NO.
PARTS LIST				
AUTOCAD	SIGN	DATE	TITLE:	
SOLIDWORKS	TDK	2/8/04	COILWS.COM, INC	
ENGR.	JLAW	2/9/04	www.coilws.com	
APPR.	JLAW	3/5/04	CWS Coil Winding Specialist.	
SCALE	2=1	3/6/04	353 W. Grove Avenue	
SIZE	1/8"	3/6/04	Orange, CA. 92865	
REV	D	3/6/04	Horizontal Toroid Inductor	
REV	D	3/6/04	HF270-101M-8AH	
SHEET	1	OF 1		